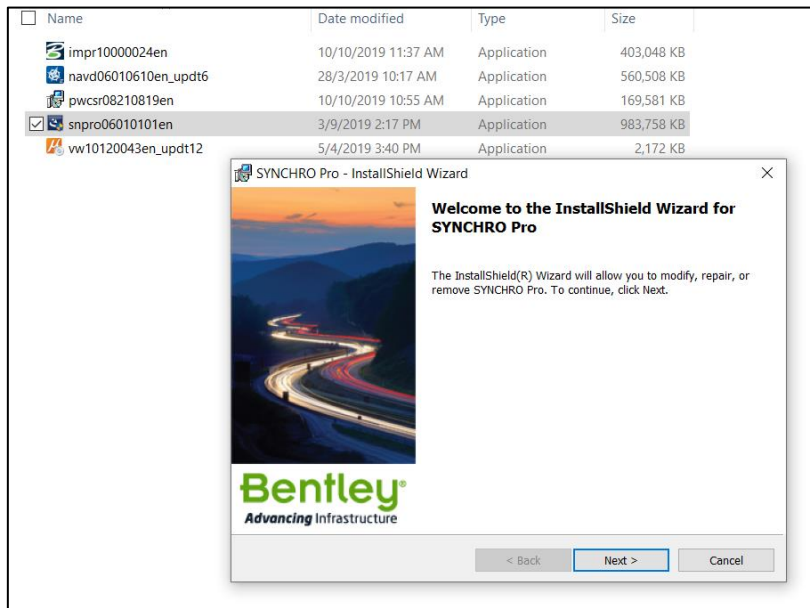


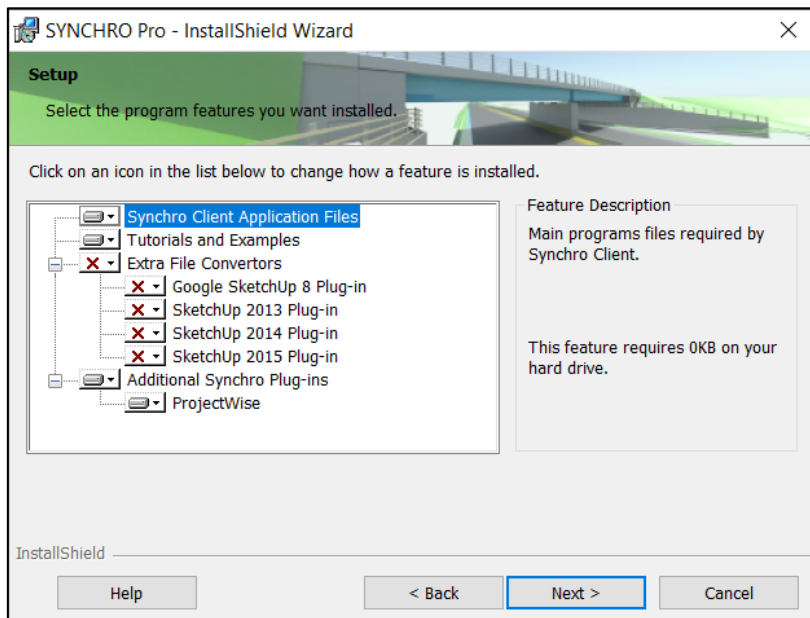
## Steps for Synchro Pro Installation

1. Right click on installer file, select "Run as administrator". Then click "Next".

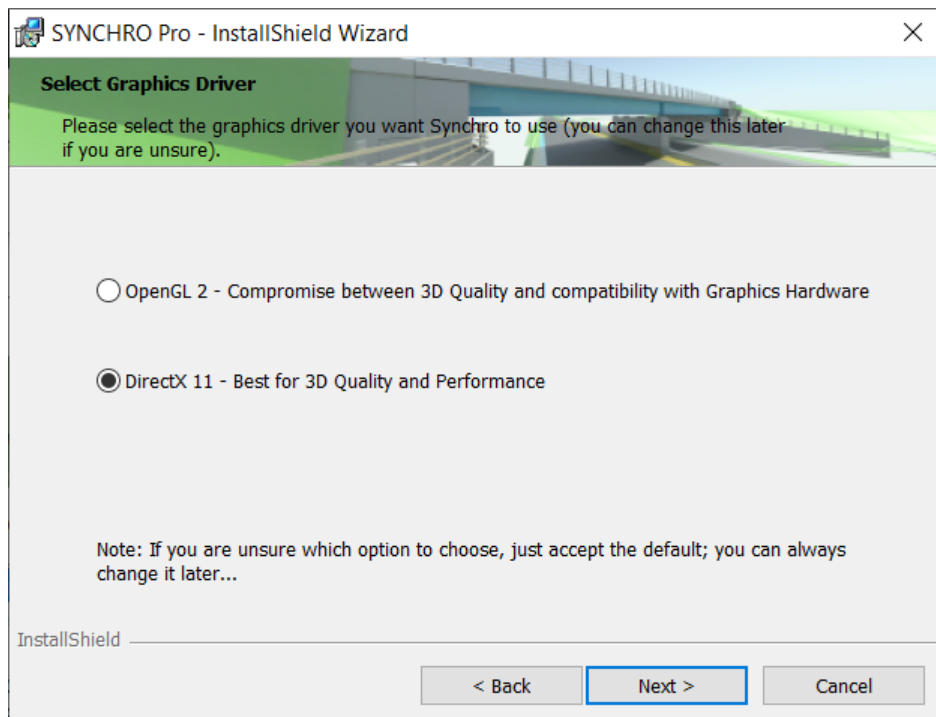


2. In the next dialog, turn on the feature for ProjectWise Plug-ins as shown below. Then click "Next".

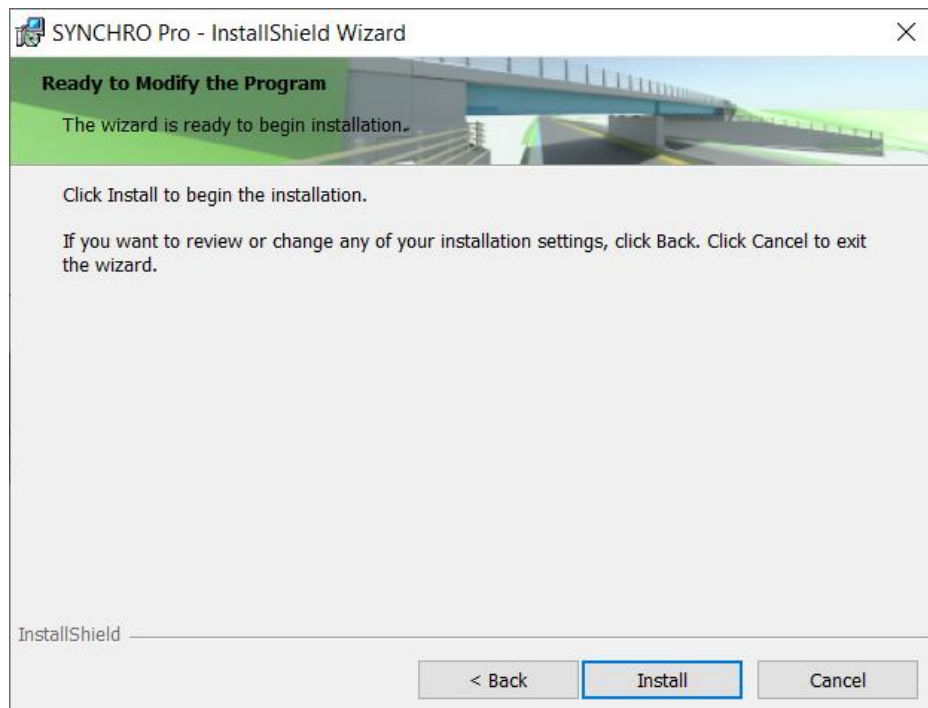
Note: User can turn on all the features if wanted.



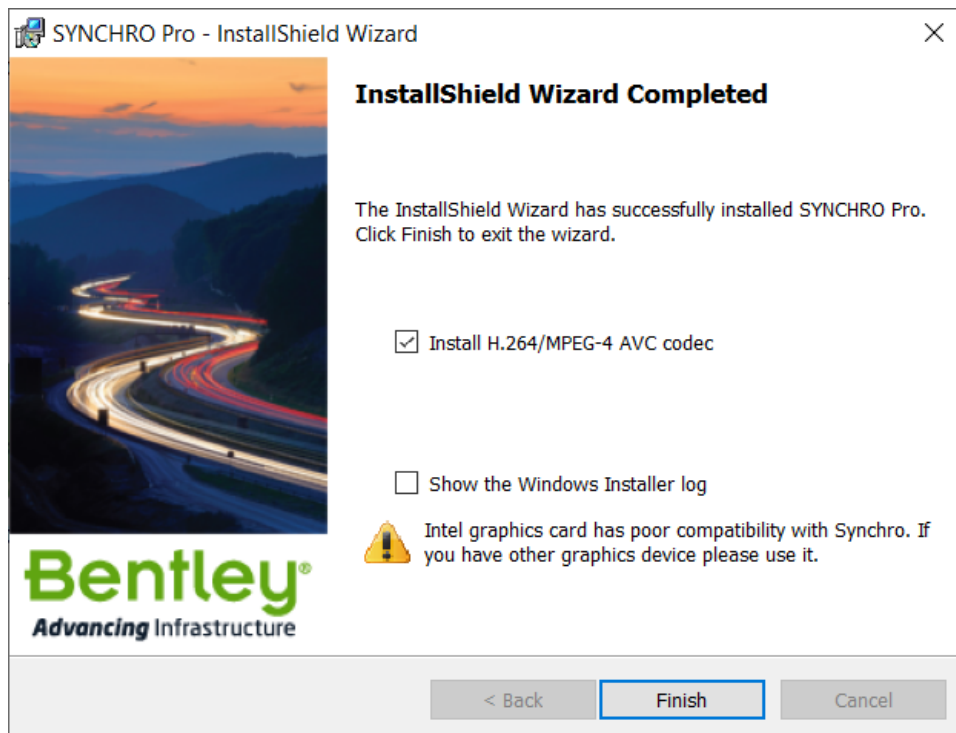
3. Select 2<sup>nd</sup> option as shown below & click “Next”.



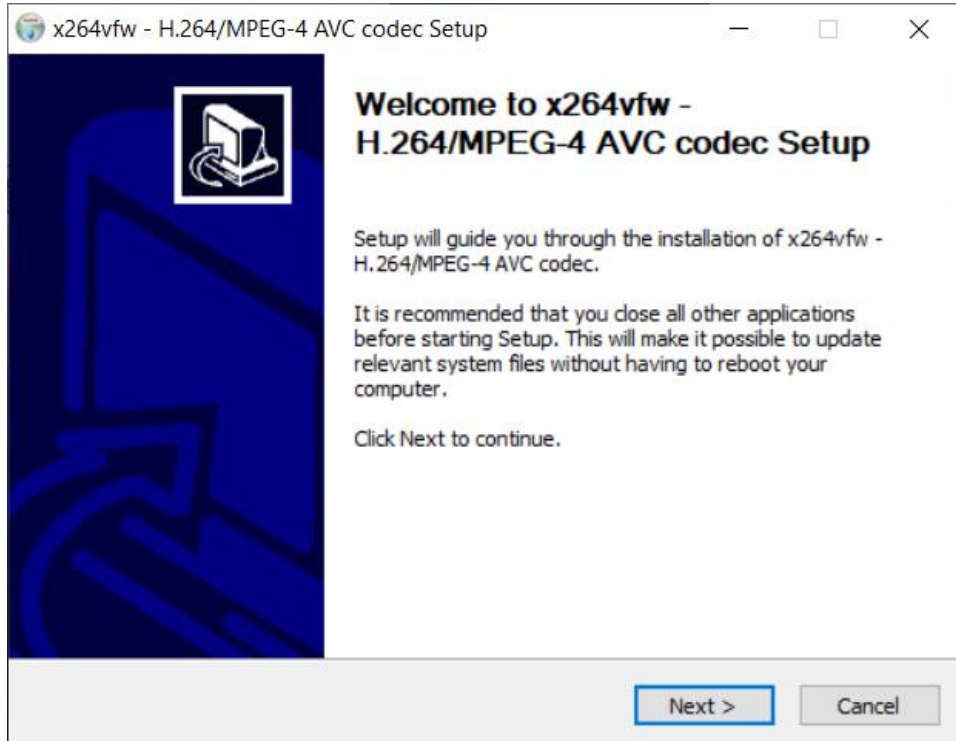
4. Click “Install” and installation process will begin.



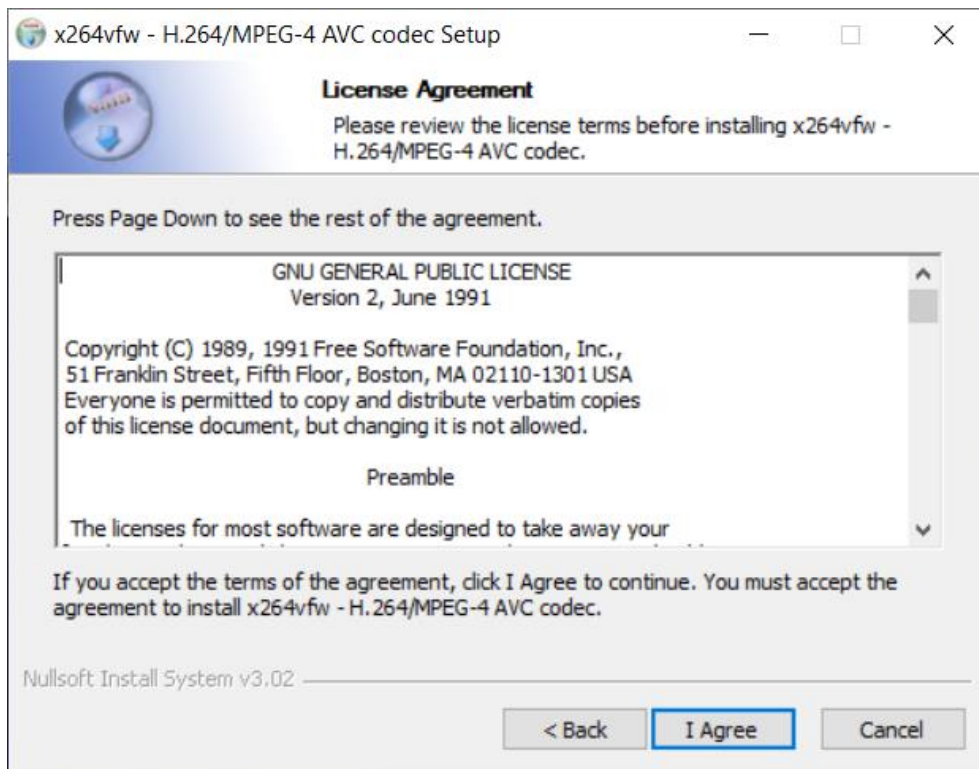
5. Once completed, select tick box to install AVC codec as shown below. Then click “Finish”.



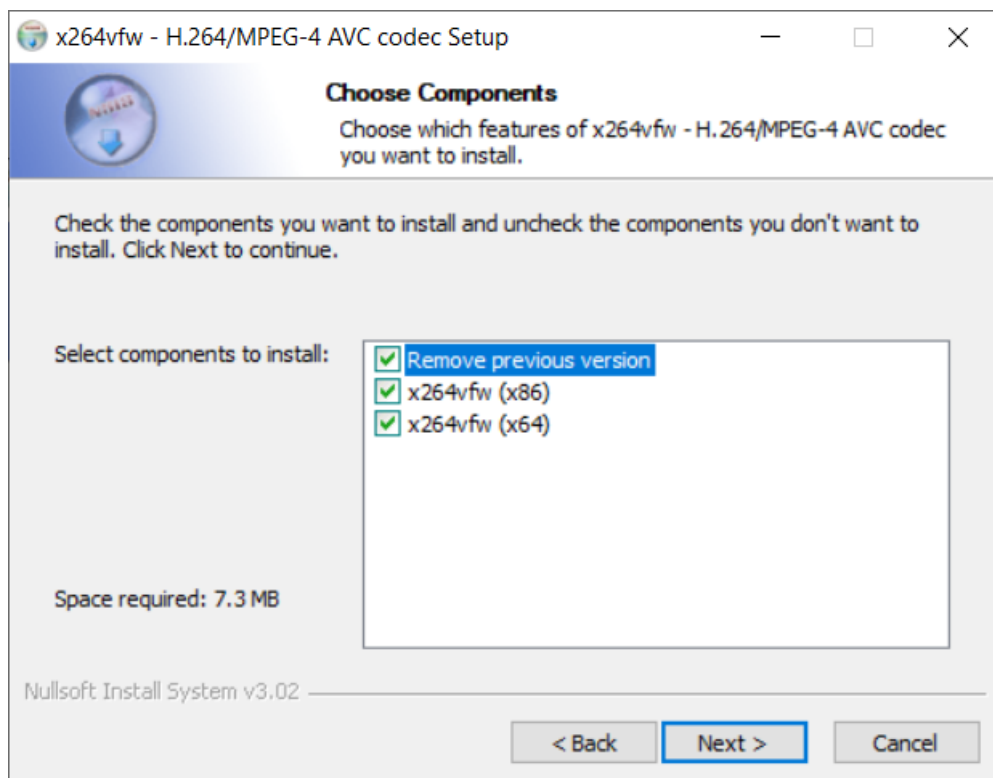
6. This dialog will be prompted & click Next for codec installation.



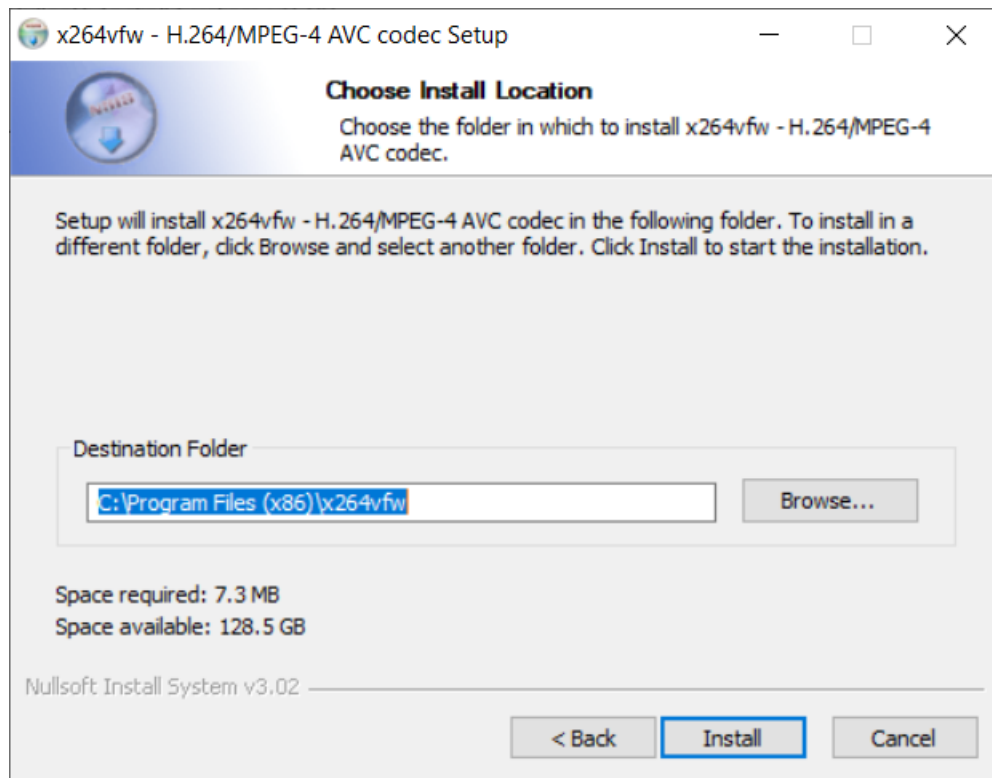
7. In the next dialog, click “I Agree”.



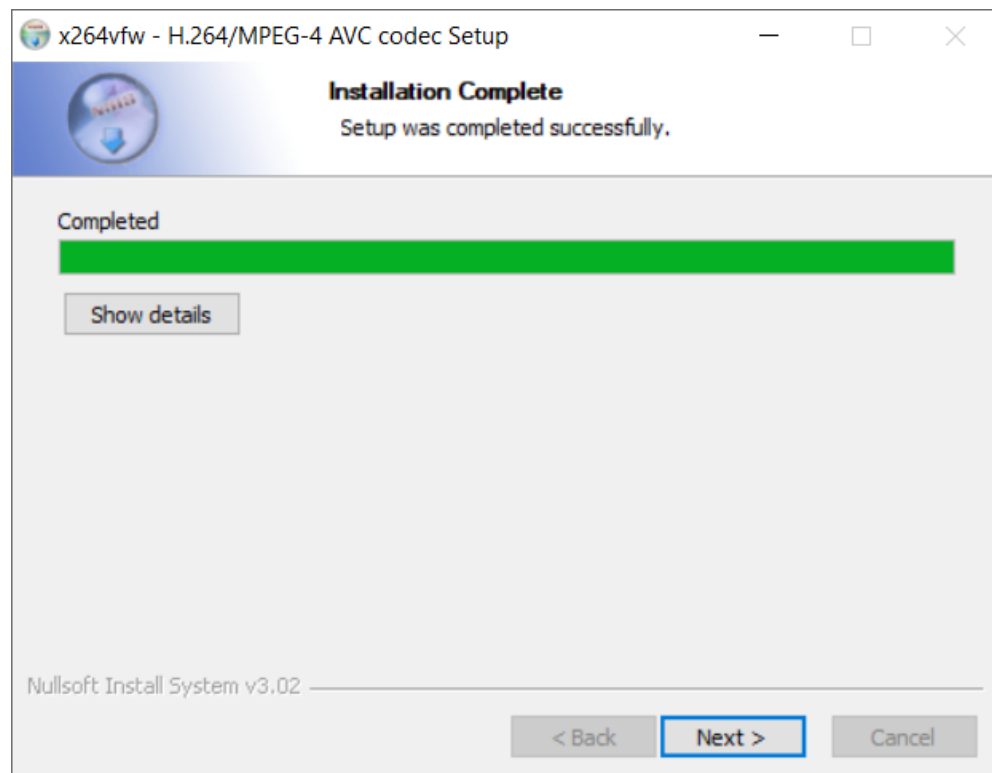
8. Select all components to install. Then click “Next”.



9. Verify the destination folder & click "Install".



10. Once completed, click "Next".



11. Click "Finish" to close Setup.

